

# Campus Sustainability Committee

Winter 2018 Quarterly Meeting  
Friday, February 16th  
2:00pm - 3:30pm  
Biella Room

# Agenda

Campus Sustainability Committee Structure Update

Task Forces Update

- Procurement

- Zero Waste

- Climate Action Planning

Climate Action Plan Review Process

Acknowledgements & Endorsements

Vote

Climate Action Implementation Task Force

Next Meeting

Friday, May 18, 2:00pm - 3:30pm, Biella Room

# Campus Sustainability Committee Structure

## Removed Ex-Officio Members

Chief Facilities Officer, Hayward Unified School District

Director of Community Engagement

## Removed Student Ex-Officio Members

ASI President

ASI Student Nominee

# Task Forces Update

## Procurement

- Exclusive use of networked printers pilot project at Concord Campus

- Evaluate in Spring Quarter for rollout at Hayward Campus

- Adobe Sign

## Zero Waste

- Bin replacement in library

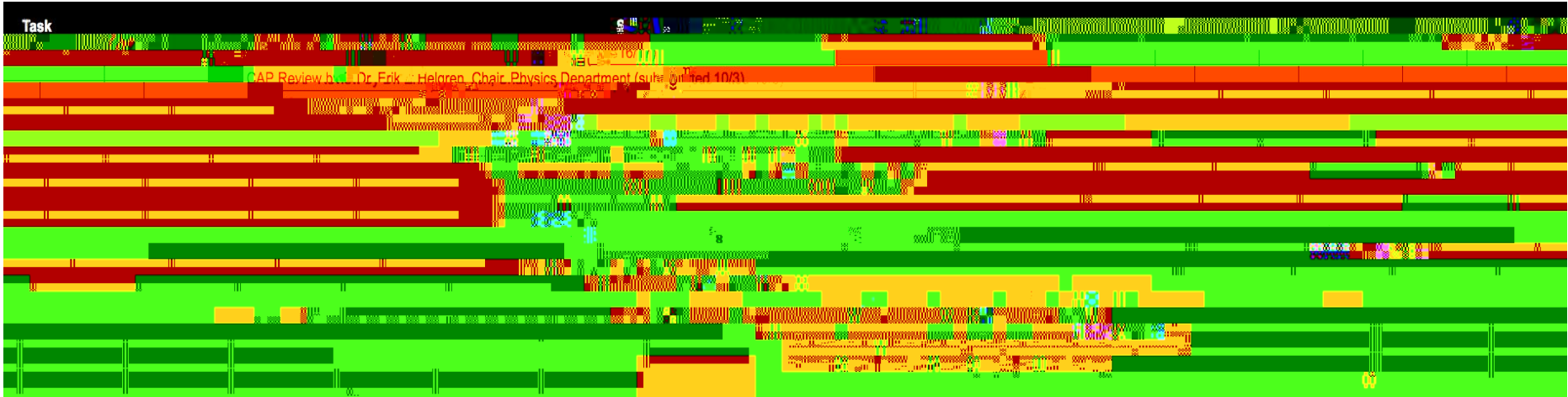
- Building zero waste plans

- Signage

- Paper Towel Compost pilot at Concord Campus

## Climate Action Planning

# Climate Action Plan Review Process





## Endorsed by:

Ad Hoc Committee on the Confidentiality of the Car & Pass Use Data Generated by Academic Senate:

Dr. Stevina Evans



University of Oregon

12/1/2014



University of Oregon



University of Oregon



University of Oregon



University of Oregon



University of Oregon

Sharon Radtke

Sharon Radtke

Sharon Radtke

Sharon Radtke

Semir Yilmaz



University of Oregon

University of Oregon

University of Oregon

University of Oregon

University of Oregon

University of Oregon

University of Oregon

University of Oregon

University of Oregon

# Climate Neutrality by 2040

Vote to endorse the Climate Action Plan for  
approval by President Morishita



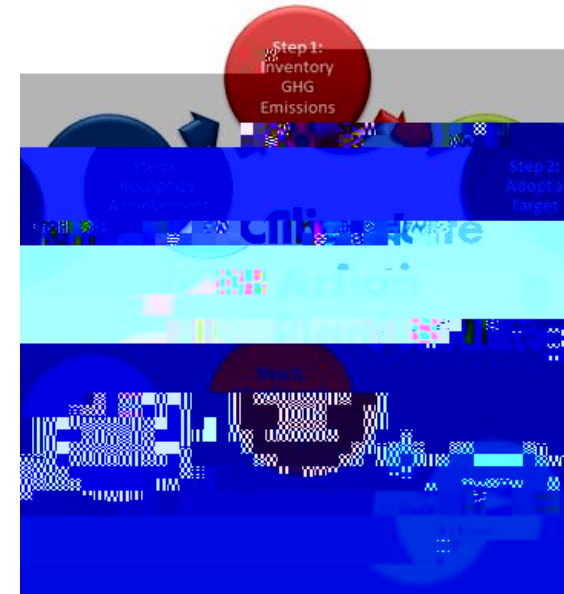
# Climate Action Implementation Task Force

Purpose: Develop implementation plan and track progress for CAP

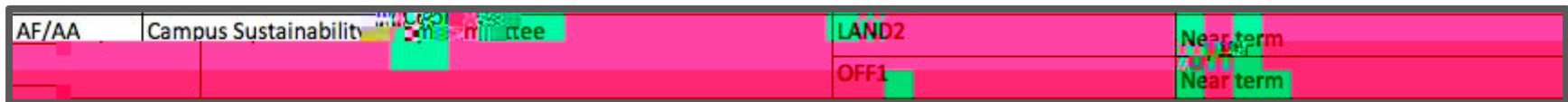
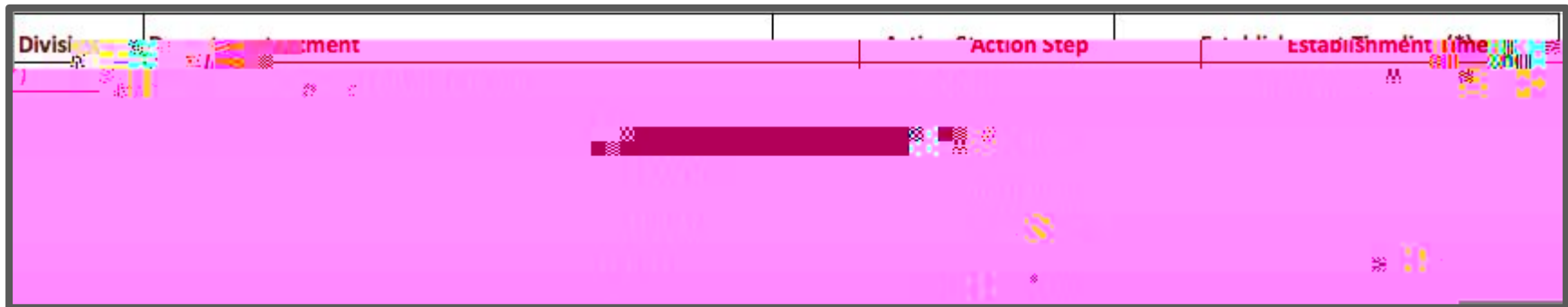
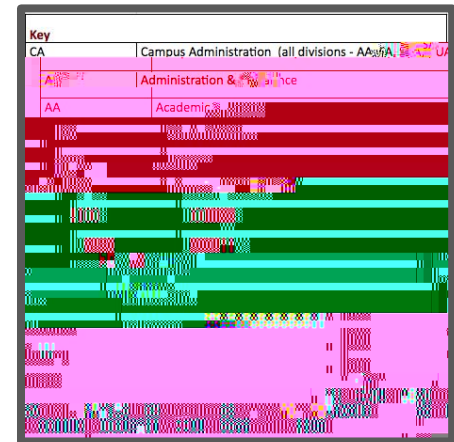
## Proposed restructure of CAP Task Force into Climate Action Implementation Task Force

Representation:

- AVP Facilities Development & Operations, or designee
- AVP Financial Services, or designee
- Chair of Senate Committee on Sustainability, or designee
- Energy & Utility Manager, or designee
- Director of Housing, or designee
- Director of Procurement Services, or designee
- Director of Sustainability
- Plus, invited faculty, students, and staff.



# Action Steps by Division



# Action Steps by Division (con't)

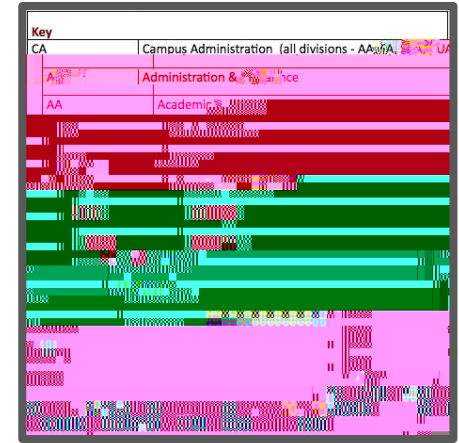
**Key**

|      |  |
|------|--|
| CA   | Campus Administration (all divisions - AA, AF, FIN, OFF, TRAN, BLDG, PROC) |
| AA   | Administration & Finance   |
| AA   | Academic Affairs   |
| AF   | Administration & Finance   |
| FIN  | Finance  |
| OFF  | Office   |
| TRAN | Transportation   |
| BLDG | Buildings  |
| PROC | Process  |

|    |   |       |                        |
|----|---|-------|------------------------|
| AF | Administration & Finance                    | TRAN4 | Near term              |
|    |   | TRAN6 | Near term              |
|    |   | FIN1  | Near term              |
|    |   | FIN2  | Near term              |
| AF | Accounting                                  | OFF1  | Near term              |
| AF | Education (Education to Board of Directors) | FIN4  | Near term              |
| AF | Institutional Technology                    | ING7  | Near term              |
|    |   | TRAN1 | Immediate to long term |
| AF | Procurement                                 | TRAN9 | Immediate              |
|    |   | BLDG2 | Near term              |
|    |   | BLDG3 | Long term (planned)    |
|    |   | PROC1 |                        |



# Action Steps by Division (con't)



|    |                                 |       |           |
|----|---------------------------------|-------|-----------|
| AA | Center for Community Engagement | EDU2  | Near term |
| AA | Faculty                         | ENG8  | Near term |
|    |                                 | EDU2  | Near term |
| AA | University extension            | TRANE | Near term |
| AA | S                               |       | Near term |



# Spring Quarter CSC Meeting

Friday, May 18th



# Edits to Climate Action Plan Draft

## Summary of Climate Action Plan

Clarified text in Figure II.2 regarding the top boundary of the plot.  
Figure II.2 and III.3 normalized for eCO<sub>2</sub>.

## Greenhouse Gas Emissions: Baseline and Projected

Updated Figure III.1, to highlight GHG emissions and Energy Use Intensity compared to the goal in the CSU Sustainability Policy to reduce emissions to 1990 levels by 2020. Previous figure was a comparison of East Bay's and other CSU campuses' emissions profiles.

Table III.1 updated to give source of data and defined "MMBtu."

Defined "stationary" in text below Figure III.3.

Clarified "CO" acronym as "Chancellor's Office."

Pg. 39, clarified language regarding CAFE standards for on-road efficiency.



# Edits to Climate Action Plan Draft (con't)

Energy Management and Supply

Clarified text regarding East Bay Community Energy (EBCE).

Trans matio)

# Edits to Climate Action Plan Draft (con't)

## Offsets

Added: *“Carbon offsets have also recently been approved by ACR for wetland restoration in the Sacramento Delta and San Francisco Estuary. Investment in wetland restoration in the Hayward shoreline, for example, could achieve co-benefits of climate adaptation in our local community.”* Included footnote citing reference.

Added accomplishment: *“Received CALL grant to pursue oak woodland restoration as a means of offsetting CSUEB greenhouse gas emissions. Oak woodland restoration on Concord campus will begin in 2018 under supervision of Professor Oikawa.”*