

Parent Family Guidebook



Our Mission

The Office of Parent and Family Program is committed to helping our parents support our students' success at Cal State East Bay. We support and inform our parents in order to help them be an integral part in making our students' college experience a success.

Contact Us

510-885-3322

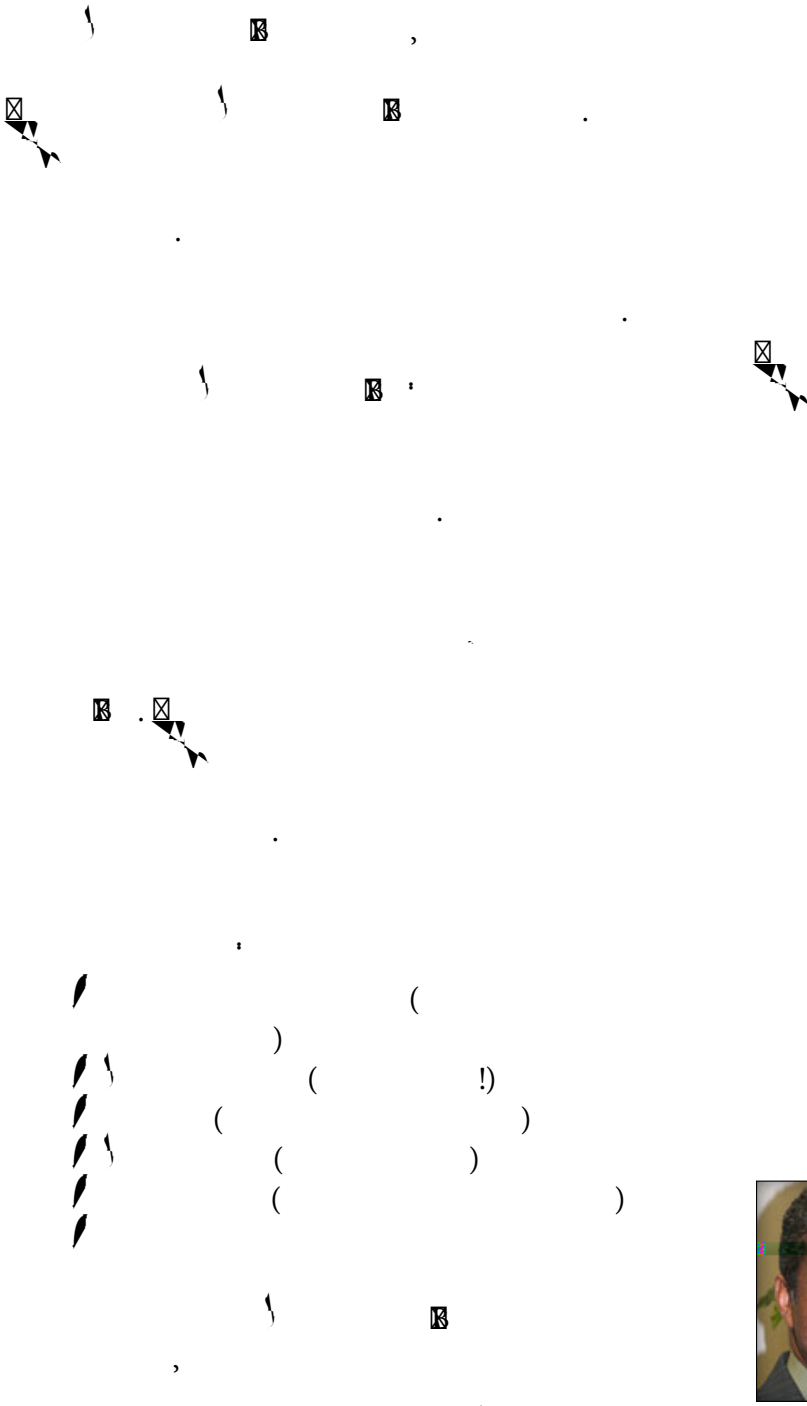
parent@csuea.edu

www.csuea.edu/parent

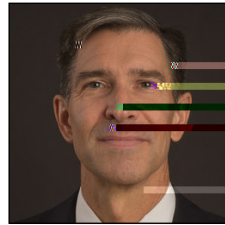
Table of Contents

☒	3
	4
☒	5
	6,
&	
	, 10
, - , ☒ } & } ☒	11
☒	12
	13
	14
&	15
	16
	1
	1
& }	1
	20
}, R	21
}, &	22
R	23
	24
/	25
	26
}	2

Welcome



University Leadership



...)

...)

... R ...

...

California State University, East Bay

Colleges and Departments

College of Letters, Arts, and Social Sciences (CLASS)

1501
 '00 . . - 5'00 . . .
 ' 510- 5-3161

Departments:

, &
 }
 } &
 }

& &
 &
 &
 &
 &

Programs:



College of Business and Economics (CBE)

12
 '00 . . . 5'00 . . .
 ' 510- 5-3323

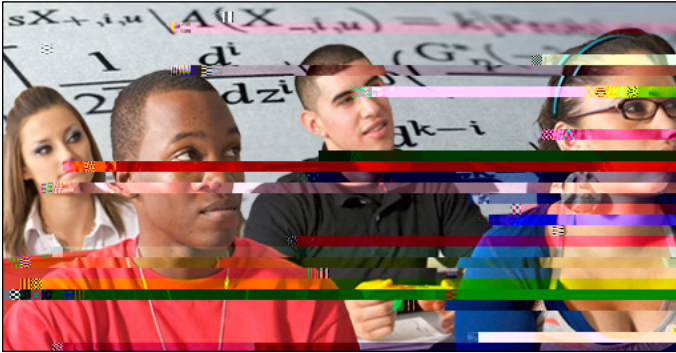
Departments:

&
 &

BSBA Online Program:

45
 510- 5-33 6

Colleges and Departments



College of Science (CSCI)

141
 '00 . . - 500 . .
 ' 510- 5-3441

Departments:

&

&

&

&

Concord Campus

4 00 R , ,
 ' 25-602-6 00

Majors at Concord:

R
 (. .)
 (R . .)

&

College of Education and Allied Studies (CEAS)

111
 '00 . . - 500 . .

Departments:

R

Academic Advising and Degree Progress

Academic Advising

Advisors are Anent A. FotudhaAdyñ RQ52AE)Cñ@3

Academic Advising and Career Education (AACE)

2
510- 5-3621

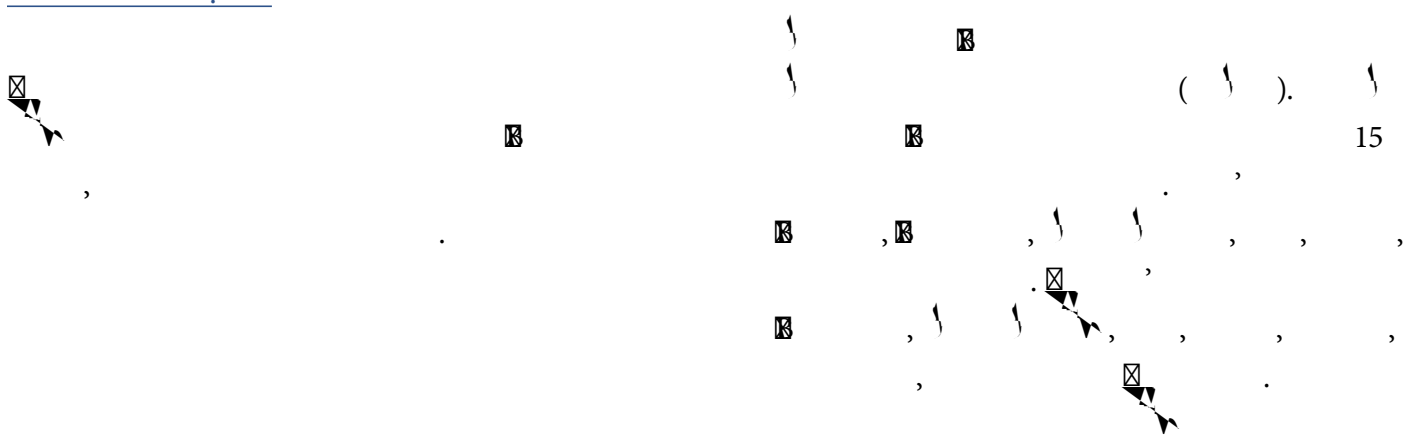
Undergraduate Student Advising

Athletics



Athletics

East Bay Pioneers

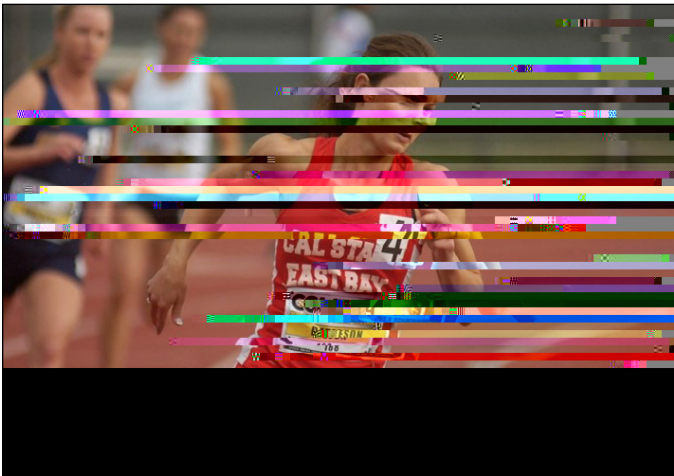


Athletics

Pioneer Championships

1 61, 250 - 152

0



Student Accounts

Student Accounts:

NetID, E-mail, BayCard and MyCSUEB

First: Activate NetID

_____ . / / / /

Second: Set up Horizon Student E-mail

_____ . _____

,

.

-

-

.

-

-

.

-

.

-

.

-

.

-

.

-

.

-

.

-

.

-

.

-

.

-

.

-

Third: Get your BayCard Student Photo ID made

ⓧ

,

,

R

ⓧ

(R ⓧ).

ⓧ

Blackboard Learning Management System

Ⓚ

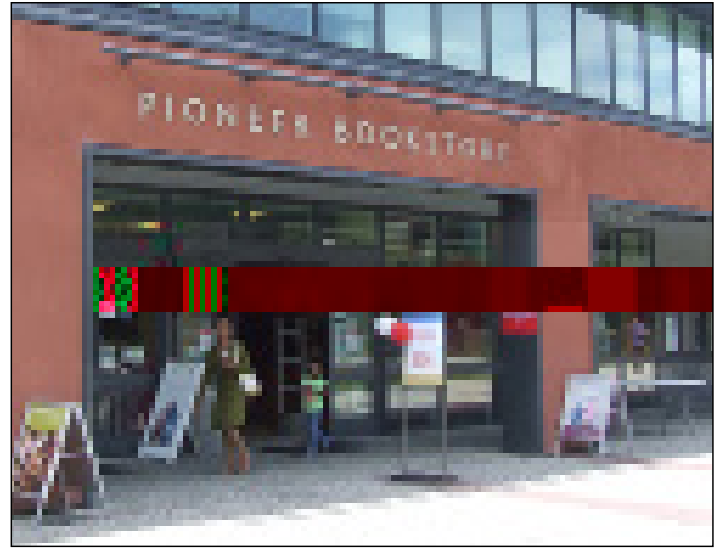
Student Service Centers

Enrolling in Classes and Pioneer Bookstore

Enrolling in Classes

☒

1. _____
2. _____
3. _____
4. _____



Pioneer Bookstore

How to Enroll in Classes for Admitted Students

1. _____
 2. _____
 3. _____
 4. _____
 5. _____
 6. _____
- R _____

Questions?

510- 5-2 4 - _____
510- 5-3 6 - _____



Honors Programs

University Honors Program (UHP)

Student Health and Wellness

Student Health and Counseling Services (SHCS)



Emergencies

24/7
-1-1, 510-531-1111

Recreation and Wellness Center

54,000-



Student Conduct, Rights and Responsibilities

Student Conduct, Rights and Responsibilities

_____ / _____ - / _____ - /
_____ / _____

R 5 , R 3-10.2 () 16. () 14. () 1 .5 () 12 () 10.4 () -10 () ☒ / ☒ 5 (101 ☒

Campus Safety, Parking and Transportation

University Police Department (UPD)

Parking and Transportation

560
30.2 ()
&
24
R 1063, (510)
5-3 1 () -1-1 ()



[Hayward Campus Map](#)

[Concord Campus Map](#)

University Police Department
510-885-3791 (non-emergency) or
9-1-1 (emergency)

Resources

&)
R
&)

_____ . /

_____ . /

_____ . /

_____ . /

_____ . /

_____ . .

_____ . /

_____ . /

_____ . /

_____ . /

_____ .

_____ . /

_____ 6()-52.1 (/)-63.2()- 0.5 ()-60 ()-5 .5 ()0.3 ()

_____ . .

General Tips

General Tips

1

R

&

Mobile App and Social Media

Campus Mobile App



Social Media Directory

_____/_____/_____/_____/_____-
_____-

