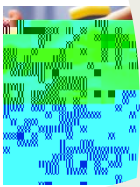




CAL STATE EAST BAY  
CELEBRATES 50 YEARS IN  
CREDENTIALING.....1



CSSC OFFICE EMAIL  
ACCOUNT.....1



CEAS COLLABORATIVE  
OFFICES: AE, CSSC, HRT/KIN...2

# CSSC focus

## Our Mission

To provide accurate and responsive credential information to students and the education community through personalized and efficient services.

## Cal State East Bay celebrates 50 years in credentialing!

On December 15, 1961, California State University, East Bay (then Alameda County State College), recorded its first credential application to the State of California—for a General Elementary Credential. Nearly fifty years later, California State University, East Bay now offers credentials to teachers, reading and literacy specialists, school counselors, school psychologists, special educators, speech-language pathologists, and administrators. We have recommended credentials and offered professional preparation courses to thousands of educators.

A celebration of this important milestone will take place:

**Monday, December 12, 2011  
4:30 – 6:30 p.m.**

**California State University, East Bay  
New University Union, First Floor  
25800 Carlos Bee Boulevard  
Hayward, CA 94542**

***Program***  
**4:30 p.m. Information Tables,  
Networking, and Hors d'oeuvres**  
**5:15 p.m. Formal Remarks**

Space is limited! Please RSVP to:  
<https://www.surveymonkey.com/s/credcelebration>

Details and registration form available on website at:  
<http://www20.csueastbay.edu/ceas/cssc/credcelebration.html>

If you have any questions, contact Latty Johnson, Director of the Credential Student Service Center, at: [credevents@csueastbay.edu](mailto:credevents@csueastbay.edu) or call (510) 885-2272.



## CSSC office e-mail account

To better serve a large number of prospective, current, and alumni candidates, Credential Student Service Center offers our office e-mail account as a quick and easy way to contact staff in CSSC for nearly every question! We look forward to hearing from you at: [credentials@csueastbay.edu](mailto:credentials@csueastbay.edu). Inquiries are usually responded to within 2 business days except during peak processing periods.

Feel free to post general questions on our Facebook wall: [www.facebook.com/CSUEBCredentials](http://www.facebook.com/CSUEBCredentials).

CEAS Staff Collaborative  
Offices: AE, CSSC,

